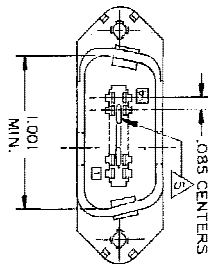
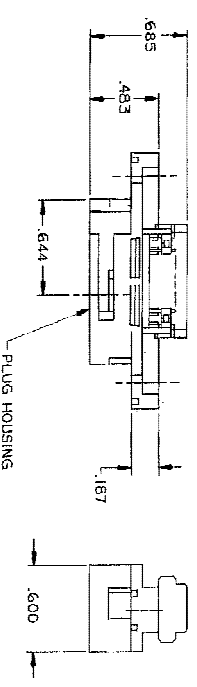
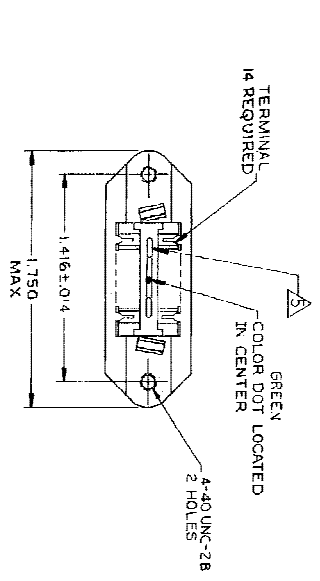


THIS DRAWING IS UNAPPROVED. REVISED FROM PREVIOUS EDITION. ALL RIGHTS RESERVED.		REVISED FROM PREVIOUS EDITION. ALL RIGHTS RESERVED.
DATE	BY	DESCRIPTION
1/24/07	ZFRW/LK	REWORK FOR ESD-86-00055A



1. THE CONTACT SURFACES OF THE TERMINALS ARE COATED WITH LUBRICANT.
2. ALL DIMENSIONS SHOWN ARE FOR REFERENCE ONLY UNLESS OTHERWISE SPECIFIED.
3. MATERIAL:
 - HOUSING - THERMOPLASTIC (BLACK)
 - TERMINALS - HIGH STRENGTH COPPER ALLOY PLATED WITH .000030 MIN GOLD, OR GOLD FLASH OVER .000030 MIN PALLADIUM NICKEL, ON CONTACT MATING SURFACE. .000050 MIN NICKEL UNDERPLATE OVER ENTIRE TERMINAL.
4. WIRE SIZE: 22 AWG SOLID OR 22 AWG 7 STRANDS OF COPPER CONDUCTORS. MAX INSULATION DIAMETER OF .045 IS ACCEPTABLE FOR MOST APPLICATIONS.

▲ CORING MAY OR MAY NOT APPEAR AND IS AT THE DISCRETION OF TYCO ELECTRONICS.

THIS DRAWING IS A CONTROLLED DOCUMENT:	DATE		12-17-79
DIMENSIONS IN INCHES	CONTROL		12-17-79
REVISIONS	DATE		12-17-79
DESCRIPTION		552300-1	
PART NO		552300-1	
DATE	BY		1/24/07
BY	DESCRIPTION		REWORK FOR ESD-86-00055A
DATE	BY		ZFRW/LK
DESCRIPTION	REVISIONS		1
APPLICATION SPEC	DATE		12-17-79
SCALE	BY		12-17-79
CUSTOMER DRAWING	DATE		12-17-79
BY	DESCRIPTION		REWORK FOR ESD-86-00055A
DATE	BY		ZFRW/LK
DESCRIPTION	REVISIONS		1
APPLICATION SPEC	DATE		12-17-79
SCALE	BY		12-17-79
CUSTOMER DRAWING	DATE		12-17-79

AS SHOWN 552300-1
DESCRIPTION PART NO

AMP 14714 REV 3/11/02